

PART OF THE NW 1/4, OF SECTION 19 T.7N., R.1W., S.L.B. & M.
DEER CREST SUBDIVISION PH1 2ND AMD

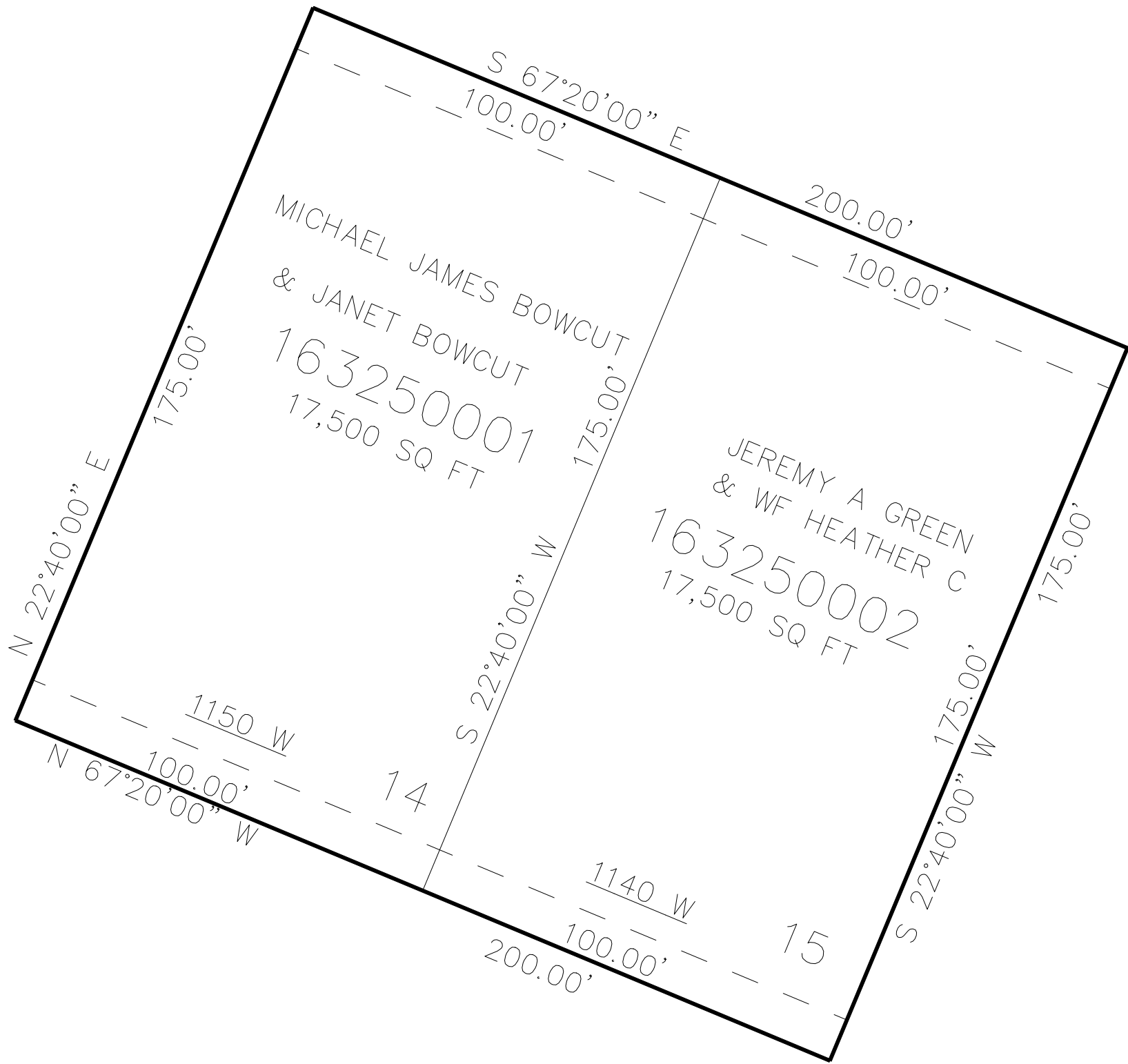
325

TAXING UNIT: 11

IN PLEASANT VIEW CITY
SCALE 1" = 30'

SEE PAGE 314

SEE PAGE 314



SEE PAGE 314

SEE PAGE 314

10' UTILITY & DRAINAGE EASEMENTS EACH
SIDE OF PROPERTY LINES AS INDICATED
BY DASHED LINES EXCEPT AS OTHERWISE
SHOWN.

FOR COMPLETE ENG DATA SEE
ORIGINAL DEDICATION PLAT IN
BOOK 79, PAGE 48 OF RECORDS.